

# Greek eHealth, version ~~1.0~~ 2,0



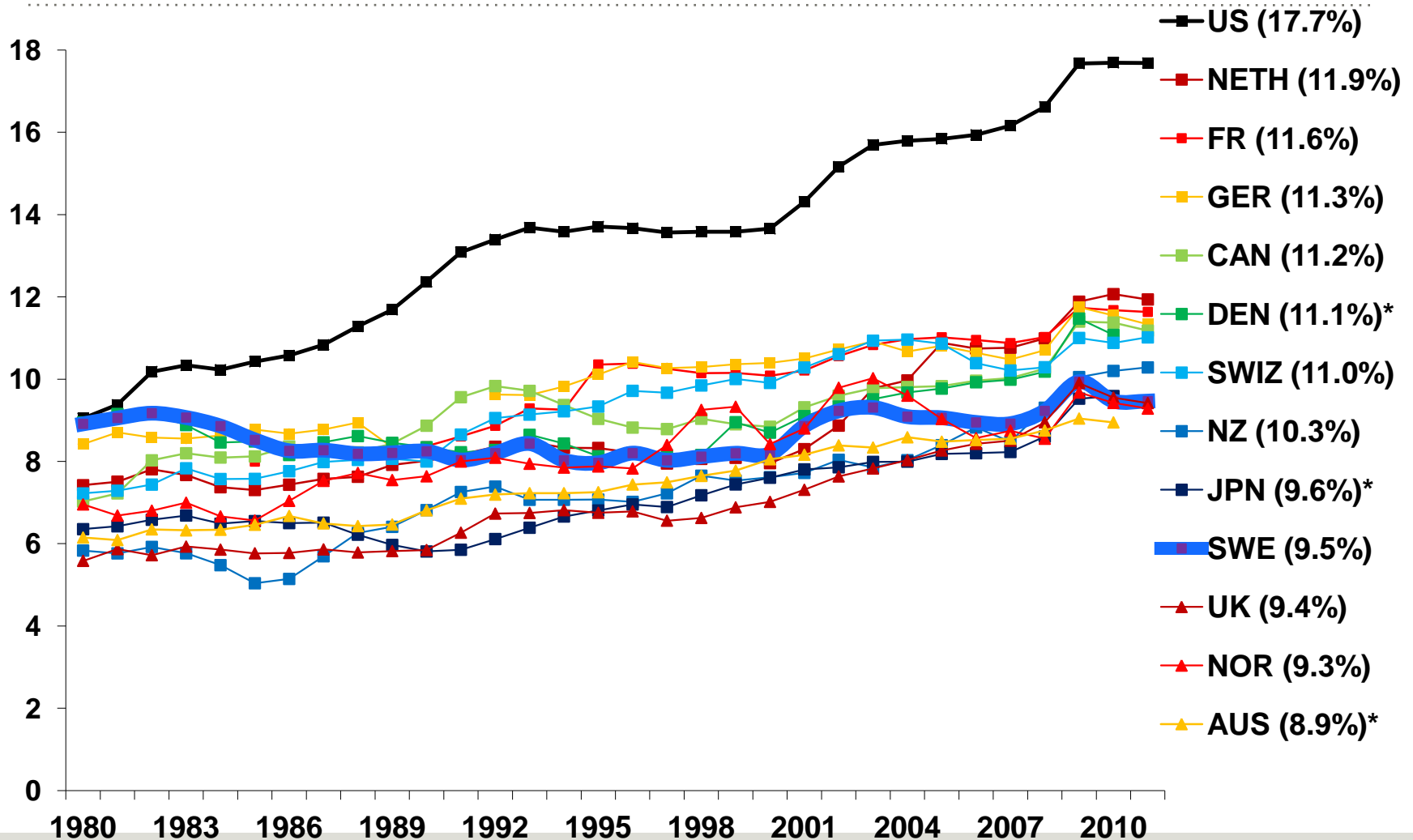
# Why eHealth in country under pressure?

---

eHealth supports the values of **equity and solidarity** by enabling the **access** to high quality services and **safer** care for all. Especially for the numerous groups of citizens with **chronic diseases** as well as the **elderly**.

At the same time it can serve as the **backbone for structural and functional reform, such as an emerging Primary HC-sector**, and for addressing the shortage of financial resources.

# National spending on healthcare, % of gdp, oecd



GDP refers to gross domestic product.

Source: OECD Health Data 2013.

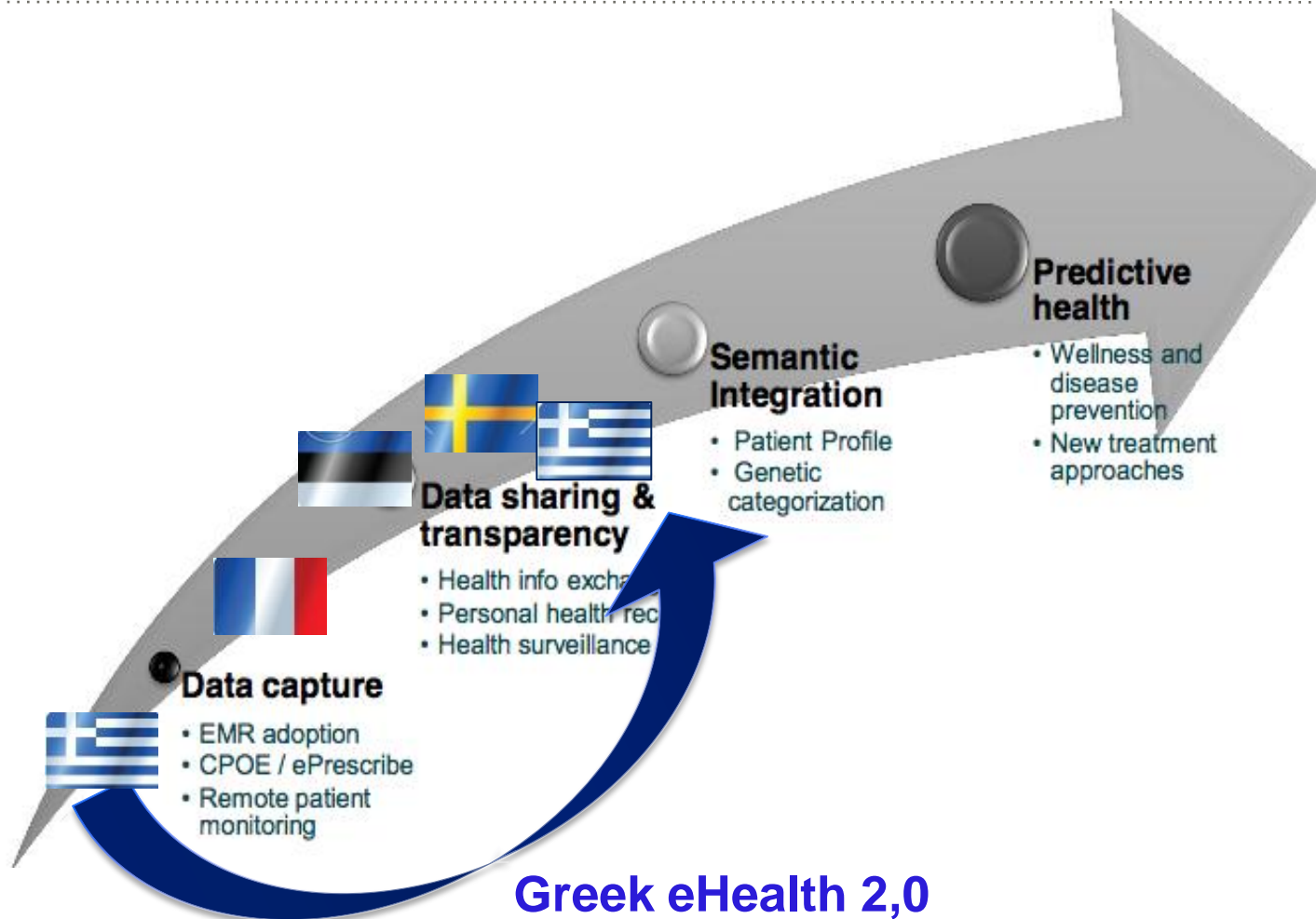
© Bilthong AB

2014-01-29

# Swedish healthcare statistics

	1980	2011	Comments
Outpatient visits	11 000 000*	28 000 000	2011 - 50% in Primary Care
Acute-care Hospitals	113	60	
Hospital beds Hb/1000 inh.	70 000 9	25 500 3	Municipal reform 1992 excluded
Average length of stay, days	11**	5	All disciplines excl. nursinghomes, long-term psych + geriatrics
IT-investments, % of turnover	0	2,9	* 1978 ** 1992 Sources: SALAR, SCB 1980, NbHW

# Learning from other's mistakes



# Be different – do it right, from the beginning

---



Calls for close monitoring and management

Calls for political commitment

Can build on existing services

Will grow step-by-step

Shared investments;  
nationally and locally,  
will give pay-back early on

Will give business to Industry

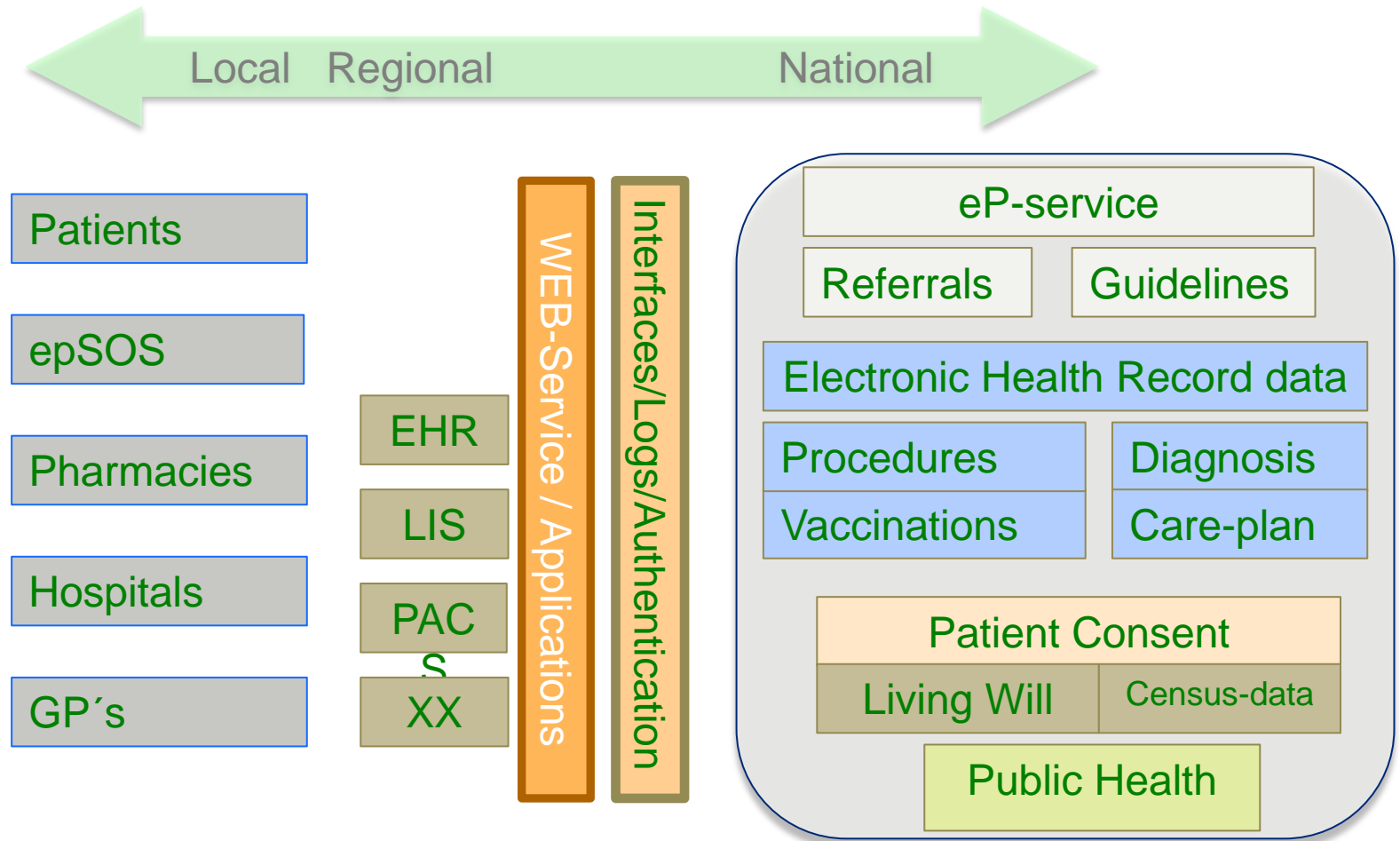


# Lessons learned...

---

- ✧ Engage the eHealth-community
- ✧ Limit “in-house” software development
- ✧ Engage Industry to benefit from their experiences and invite them to compete for business
- ✧ Offer stakeholders transparency, guidelines and service specifications
- ✧ Take a firm stand on basic specifications – standards, terminology, information-structure, interfaces etc.
- ✧ Establish feed-back mechanism to allow for corrections and improvements

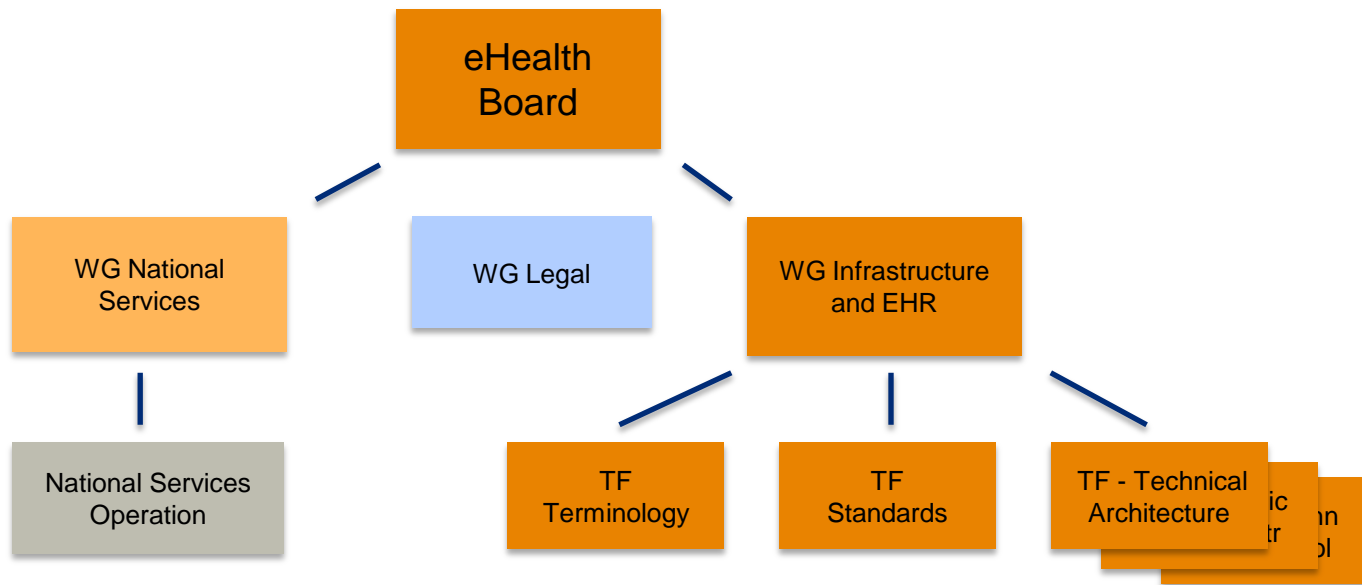
# Greek eHealth, ver. 2,0



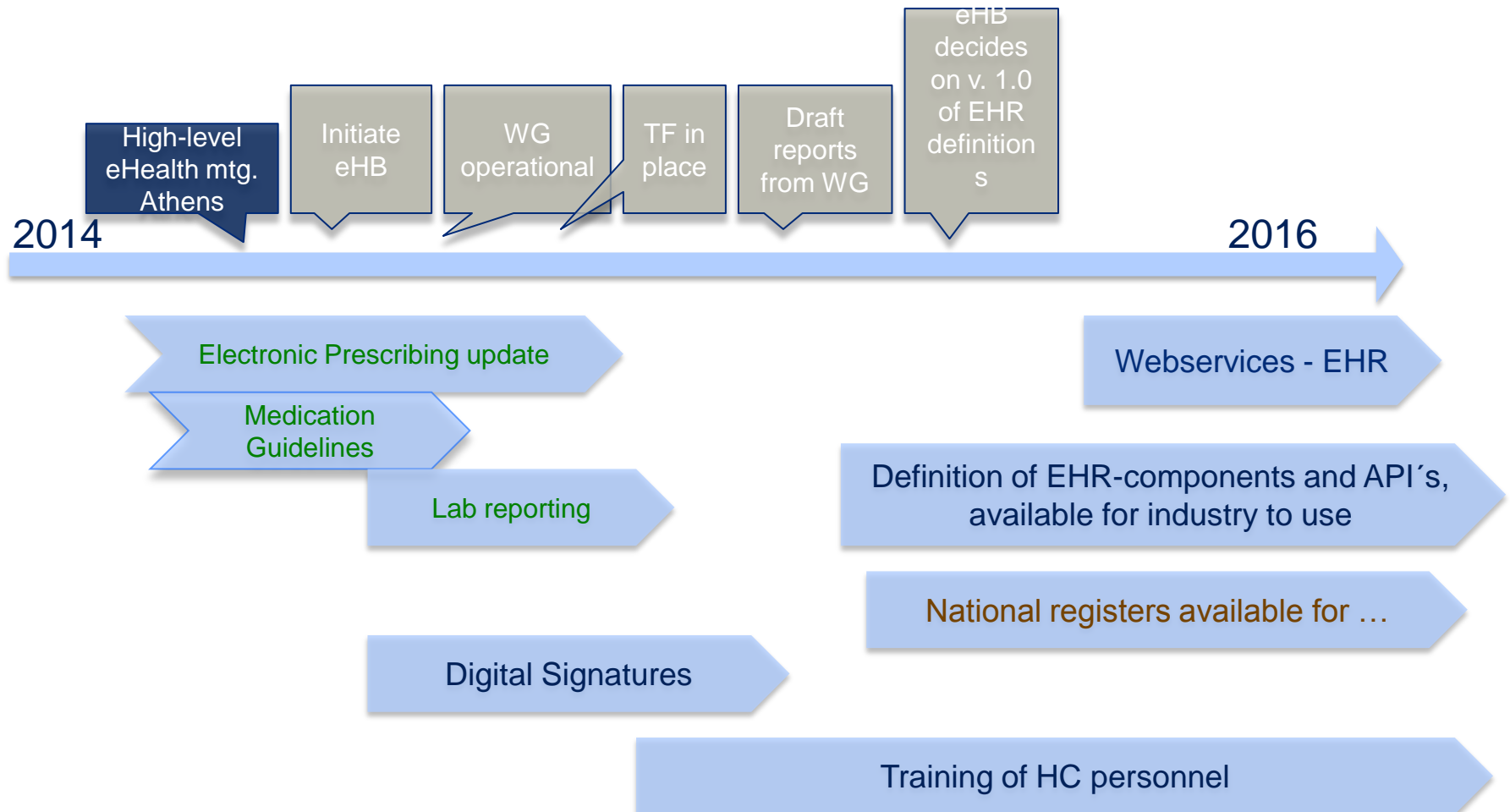


# Governance model, Greek eHealth, ver. 2,0

- National eHealth Board (eHB)
- Working Groups for each responsibility (WG)
- Task Forces for specific tasks (TF)



# National plan for prioritized eHealth services



# The End!

---

[mats.larson@bilthong.com](mailto:mats.larson@bilthong.com)