

**Living Healthy  
Ageing Well**



# **EIP AHA**

European Innovation Partnership on Active and Healthy Ageing

## **eHealth Forum 2014**

**EU Greek Presidency  
Athens, Greece**

**12-14 May 2014**

**Presentation in EIP AHA Track**

**D4 Action Group**

**13 May 2014**

**-on-**

## **K-CoRD Project**

**Kinsale Community Response to  
Dementia**



[www.kcord.ie](http://www.kcord.ie)



K-CORD

KINSALE COMMUNITY  
RESPONSE TO DEMENTIA

# K-CoRD Media Exposure

**GENIO**

Kinsale dementia project

**Kinsale Community Response to Dementia in CoRD**

Local organisations The Health Care Trust

What project: 2012-2014

Background: This project was established in a collaborative, community-based, dementia care model in response to the growing need for dementia care in Kinsale. It is a partnership between the Health Care Trust, the Kinsale Community Response to Dementia in CoRD, and the Kinsale Dementia Project. The project aims to provide a range of support services to people with dementia and their carers, including information, advice, and practical support. The project is a partnership between the Health Care Trust, the Kinsale Community Response to Dementia in CoRD, and the Kinsale Dementia Project.

**Kinsale dementia pilot project**

By Daniel Ryan

It is a pilot project to help people with dementia and their carers. The project is a partnership between the Health Care Trust, the Kinsale Community Response to Dementia in CoRD, and the Kinsale Dementia Project. The project aims to provide a range of support services to people with dementia and their carers, including information, advice, and practical support. The project is a partnership between the Health Care Trust, the Kinsale Community Response to Dementia in CoRD, and the Kinsale Dementia Project.

**Students' aptitude for innovation recognised**

By John Hynes and Joe Doherty

The Kinsale Dementia Project has been recognised for its innovative approach to dementia care. The project is a partnership between the Health Care Trust, the Kinsale Community Response to Dementia in CoRD, and the Kinsale Dementia Project. The project aims to provide a range of support services to people with dementia and their carers, including information, advice, and practical support. The project is a partnership between the Health Care Trust, the Kinsale Community Response to Dementia in CoRD, and the Kinsale Dementia Project.

**GENIO**

Public support can change lives of people with dementia

Local organisations The Health Care Trust

What project: 2012-2014

Background: This project was established in a collaborative, community-based, dementia care model in response to the growing need for dementia care in Kinsale. It is a partnership between the Health Care Trust, the Kinsale Community Response to Dementia in CoRD, and the Kinsale Dementia Project. The project aims to provide a range of support services to people with dementia and their carers, including information, advice, and practical support. The project is a partnership between the Health Care Trust, the Kinsale Community Response to Dementia in CoRD, and the Kinsale Dementia Project.

**Network's support for people with dementia**

By Daniel Ryan

The Kinsale Dementia Project has been recognised for its innovative approach to dementia care. The project is a partnership between the Health Care Trust, the Kinsale Community Response to Dementia in CoRD, and the Kinsale Dementia Project. The project aims to provide a range of support services to people with dementia and their carers, including information, advice, and practical support. The project is a partnership between the Health Care Trust, the Kinsale Community Response to Dementia in CoRD, and the Kinsale Dementia Project.

**A lot done, more to do for K-CoRD project**

By Daniel Ryan

The Kinsale Dementia Project has been recognised for its innovative approach to dementia care. The project is a partnership between the Health Care Trust, the Kinsale Community Response to Dementia in CoRD, and the Kinsale Dementia Project. The project aims to provide a range of support services to people with dementia and their carers, including information, advice, and practical support. The project is a partnership between the Health Care Trust, the Kinsale Community Response to Dementia in CoRD, and the Kinsale Dementia Project.

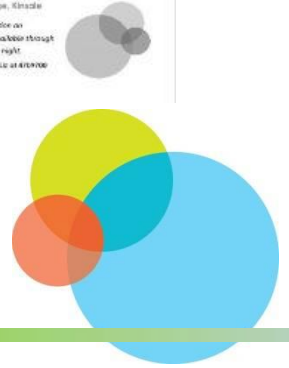
**Kinsale Community Response to Dementia in CoRD**

Background: This project was established in a collaborative, community-based, dementia care model in response to the growing need for dementia care in Kinsale. It is a partnership between the Health Care Trust, the Kinsale Community Response to Dementia in CoRD, and the Kinsale Dementia Project. The project aims to provide a range of support services to people with dementia and their carers, including information, advice, and practical support. The project is a partnership between the Health Care Trust, the Kinsale Community Response to Dementia in CoRD, and the Kinsale Dementia Project.

**K-CoRD Carers Group**

SUPPORT GROUP FOR CARERS meeting WED 28 MAR 7:30-9pm at 24 Haven Bay Kinsale #KinsaleApp #KinsaleNews @belgooly\_ie

Background: This project was established in a collaborative, community-based, dementia care model in response to the growing need for dementia care in Kinsale. It is a partnership between the Health Care Trust, the Kinsale Community Response to Dementia in CoRD, and the Kinsale Dementia Project. The project aims to provide a range of support services to people with dementia and their carers, including information, advice, and practical support. The project is a partnership between the Health Care Trust, the Kinsale Community Response to Dementia in CoRD, and the Kinsale Dementia Project.





# Kinsale Town and Hinterland



**Members of K-CoRD Consortium**

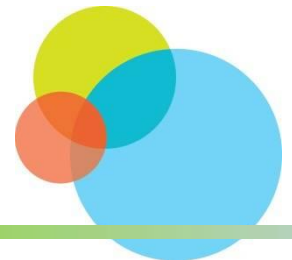
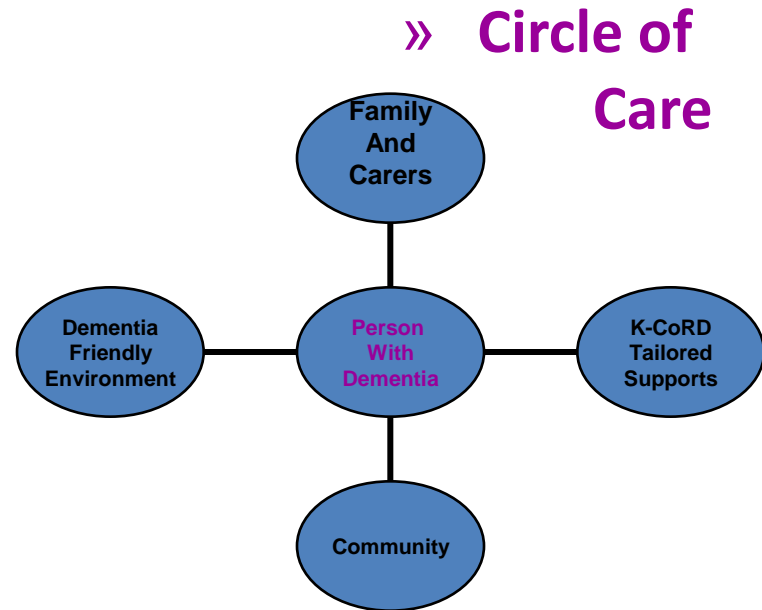


**Kinsale Town**



# Paradigm of the Project

- Create a **Circle of Care** around the person with dementia
- Collaborating with, enhancing and Coordinating existing services
- Delivering to the clients a package tailored to their individualised needs
- Introducing the benefits of Assisted Technology
- Develop Kinsale as a Dementia Friendly Environment



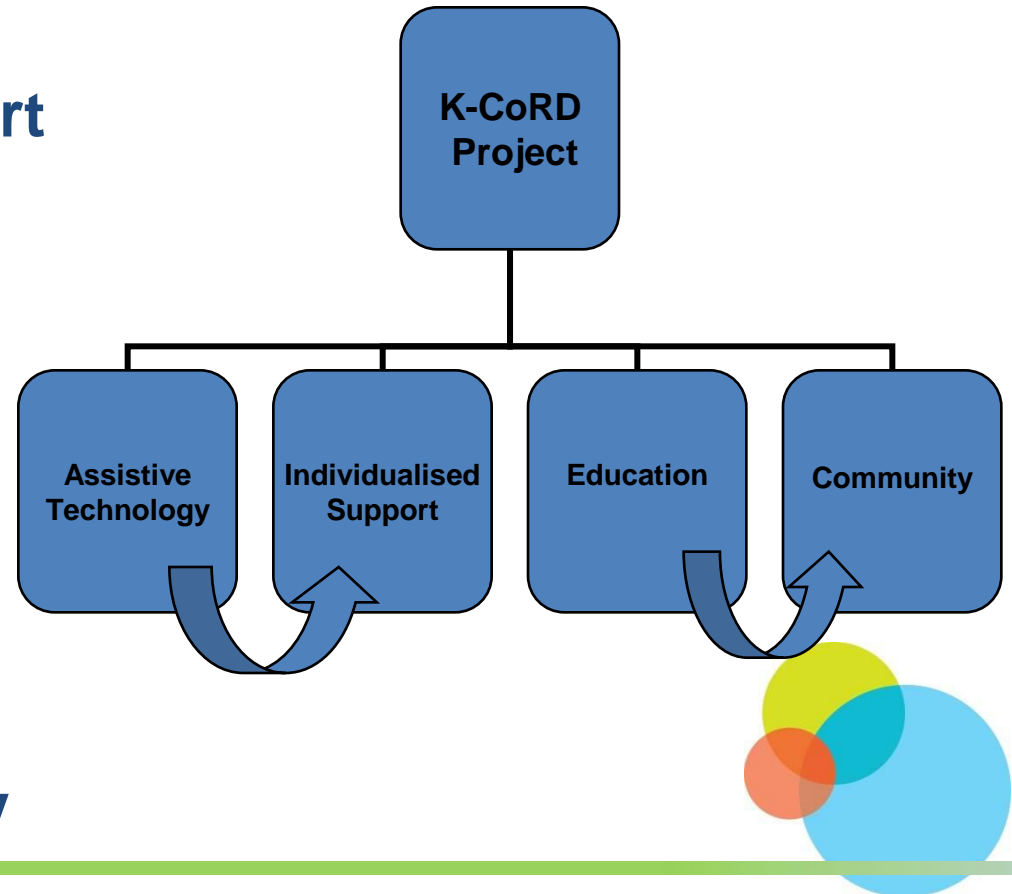
# Project Streams

**Individualised Support**

**Community**

**Education**

**Assistive Technology**



# Individualised Care supported with Assistive Technology

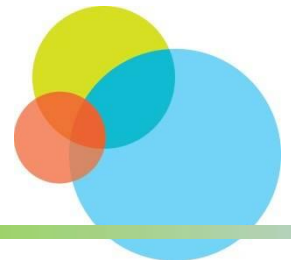
- **Dementia Registers in General Practices created**
- **Consultation with Persons with Dementia with 30 clients assessed with support now in place.**
- **Carer Support Group with information sessions included**
- **Volunteer Training undertaken**
- **Dementia friendly home as a demo area with AAL system developed by CASALA with PP presentation for clients**

60 Clients to be assessed in 2014

Family Carer Sessions are scheduled to commence May/June 2014

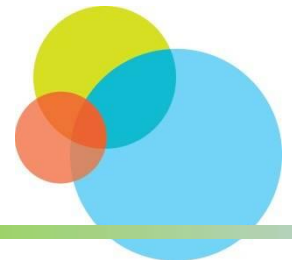
Befriending service by Volunteers Scheduled to commence

3 installations in clients ' homes



# Education – Community

- **Approval was received from Local Ethics Committee to do qualitative research on dementia specific learning needs with local GP's and allied healthcare professionals**
- **A reference guide for dementia for the ICGP's to be published June 2014 was written by Dr. Tony Foley & Prof. Greg Stanwick**
- **Kinsale College of Further Education is developing a FETAC Level 5 dementia module to commence September 2014**
- **Volunteer training took place Oct 2013. Volunteers now participating**
- **K-CoRD hosted a Dementia Conference in Kinsale November 2013 with attendance of 220. Next Conference scheduled for 2015**
- **K-CoRD participates in an ongoing Learning Partnership with the three other pilot sites under the Genio Dementia Programme**





# Community Awareness

- **K-CoRD attended the first Irish Dementia Friendly Community Forum in October 2013 facilitated by the ASI**

Ongoing Partnership with ASI

- **K-CoRD is involved with Transition Year (TY) Secondary School Programme with 2 students assisting at Dementia Conference November 2013**

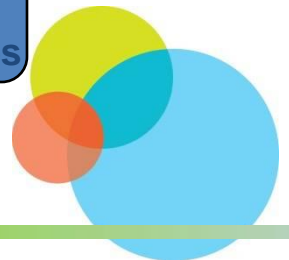
Third student currently working on project of old and new photos for reminiscence project

- **BT Young Scientist Exhibition preparation in 2013**

2 students submitted on “Dementia Awareness in Ireland”

- **Community Awareness presentations took place in the latter 3 months**

Workshops on becoming dementia friendly to be offered to business, services providers, clubs & societies



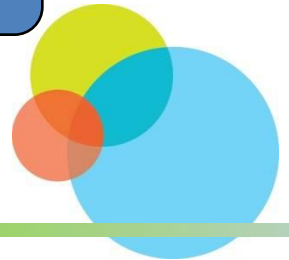
# Community Activities

- **The K-CoRD Café is held once a week. The programme of activities is determined by clients and carers**
- **“Walking and Cycling Strategy for Kinsale” is currently awaiting approval from Council**
- **VISION “exploring the arts with new eyes”. Art appreciation/specialised workshops for persons with dementia were held in 2013**

Trained Volunteers are now Coordinating same. On special Occasions “Theme” events are held

Initiatives to identify potential improvements to make environment more age and Dementia friendly

2 Events scheduled for May  
Further events being planned



# Innovative Programme of Good Practice

- **The K-CoRD project is truly innovative and is enabling persons living with dementia to remain in their own homes and active in their community longer**
- **Dementia is now firmly established as a health priority for action in Ireland**
- **The findings of the K-CoRD project will lead into the Irish National Strategy for Dementia**
- **The paradigm of the K-CoRD project is a model of good practice by delivering better healthcare through collaborative and coordinated supports to persons with dementia**
- **By working in partnership it can be successfully replicated and scaled up throughout Ireland and the European Union**





**Thank You**

*Ann Twomey*



13 May, 2014

